

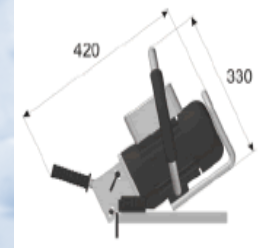
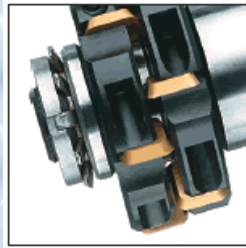
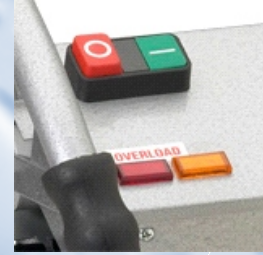
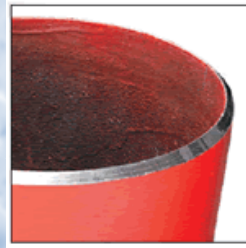
LKF - 200

KAYNAK AĞZI AÇMA MAKİNESİ



LKF - 200

Motor / Voltaj	230V - AC
Motor Gücü	1100W
Dönüş Hızı	2850 dak./1
Kesme Hızı	(± %10) 550mm dak/1
İlerleme	Manuel
Kaynak Ağızı Genişliği	0 - 20 mm
Kaynak Ağızı Açısı	15° - 60°
Ağırlık	22 Kg



MARINE ENGINEERING

Adres: Yayla Mah. Vatan Cad. MEKA İş Merkezi No: 58 Kat:3 D.16
Tuzla - İSTANBUL / TURKEY

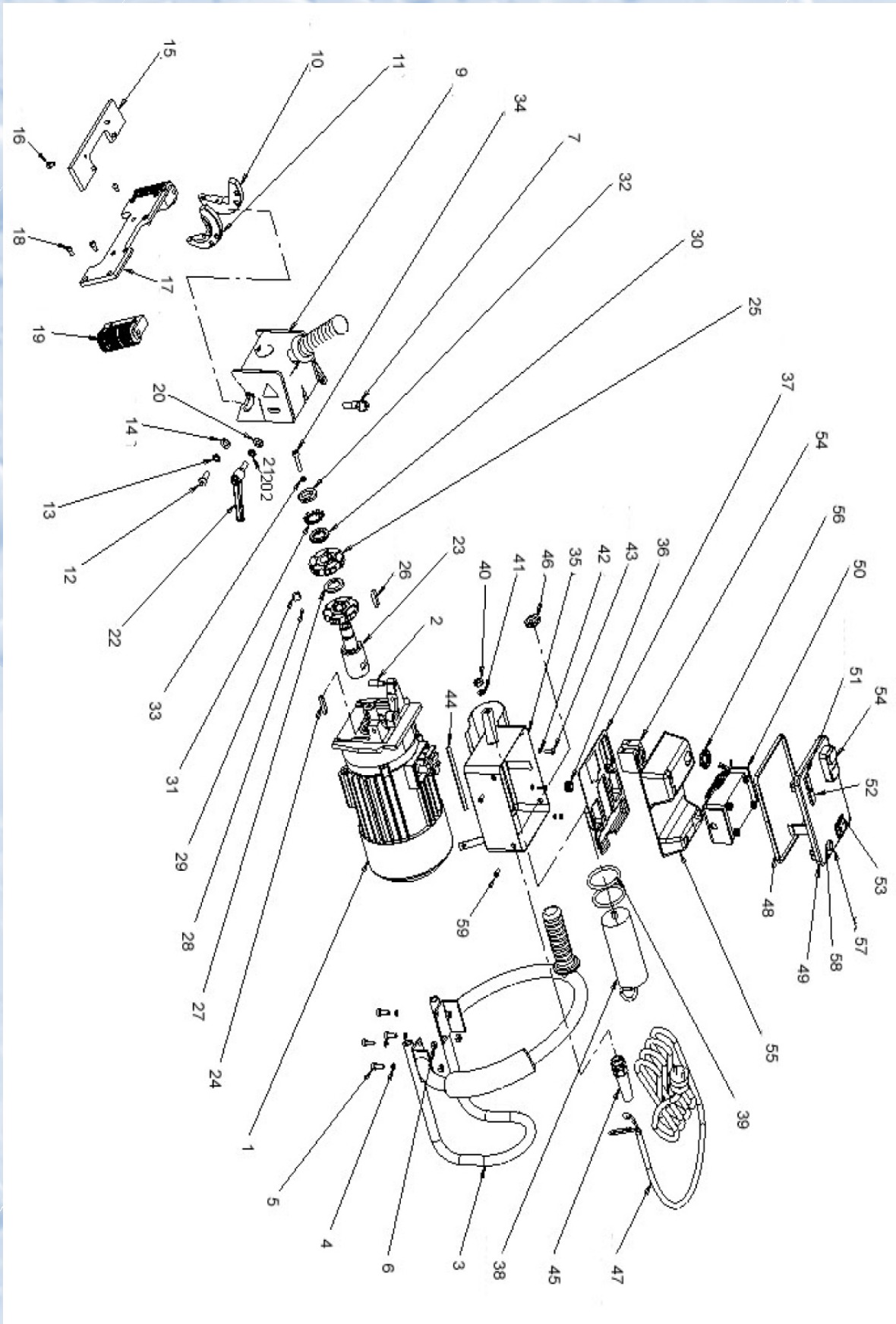
Tel: + 90 216 701 23 13 Fax: +90 216 701 23 14 Gsm: +90 532 506 39 59
web: www.marine-engineering.net

Drawing nr.	Art. nr.	Description
1	LKF.0001	Motor Assembly
2	LKF.0041	Stop pin
3	LKF.0006	Holder set
4	LKF.0011	Cushion Washer
5	LKF.0016	Bolt
6	LKF.0021	Nut
7	LKF.0026	Feed Bolt
9	LKF.0036	Spindle Housing
10	LKF.0086	Slides mounting II
11	LKF.0076	Slides mounting I
12	LKF.0057	Bolt
13	LKF.0066	Spring washer
14	LKF.0071	Washer
15	LKF.0061	Guide Slide I
16	LKF.0056	Bolt
17	LKF.0081	Guide Slide II
18	LKF.0056	Bolt
19	LKF.0060	Roller
	LKF.0500	Rolling Guide (#17 + 2x#19)
20	LKF.0071	Washer
21	LKF.0046	Spring washer
22	LKF.0051	Lock Handle
	LKF.0051/2	Lock Handle
23	LKF.0126	Milling Head Arbor
24	LKF.0131	Motor key
25	LKF.0136	Milling Head (1pc.)
26	LKF.0141	Milling Head key
27	LKF.0146	Distance ring
28	LKF.0151	Insert Bolt
29	LKS.10	Cutting Plate Gold
	LKS.10R	Cutting Plate Black (straight edge)
	LKS.10T	Cutting Plate TiAlN coated
30	LKF.0313	Washer
31	LKF.0301	Safety Washer
32	LKF.0306	Bearing Nut
33	LKF.0011	Cushion Washer
34	LKF.0311	Bolt
35	LKF.0381	Controller Cover
36	LKF.0351	Seal
37	LKF.0396	Internal Insulation
38	LKF.0356	Capacitor
39	LKF.0361	Rubber ring
40	LKF.0389	Nut
41	LKF.0386	Spring washer
42	LKF.0376	Washer
43	LKF.0366	Screw
44	LKF.0391	Seal L120
45	020.0031	Coupling nut
46	LKF.0400	Plastic Nut
47	020.0036	Main Cable
48	LKF.0326	Seal L520
49	LKF.0346	Cover
50	LKF.0316	Controller unit
51	LKF.0331	Red indicator
52	LKF.0341	Amber indicator
53	020.0011	Main Switch (magnet switch)
54	020.0006	On/Off Switch
55	LKF.0401	Cover insulation
56	LKF.0402	Nut for On/Off Switch
57	020.0016	Fuse holder
58	020.0017	Fuse F2A
59	LKF.0336	Screw
not on drawing	LKF.0406	Tool Box
not on drawing	LKF.0411	Tool for bearing nut
not on drawing	LKF.0416	Pusher tool
not on drawing	LKF.0421	Puller tool
not on drawing	CAS.200/3	Metal case for LKF.200

MARINE ENGINEERING

Adres: Yayla Mah. Vatan Cad. MEKA İş Merkezi No: 58 Kat:3 D.16
Tuzla - İSTANBUL / TURKEY

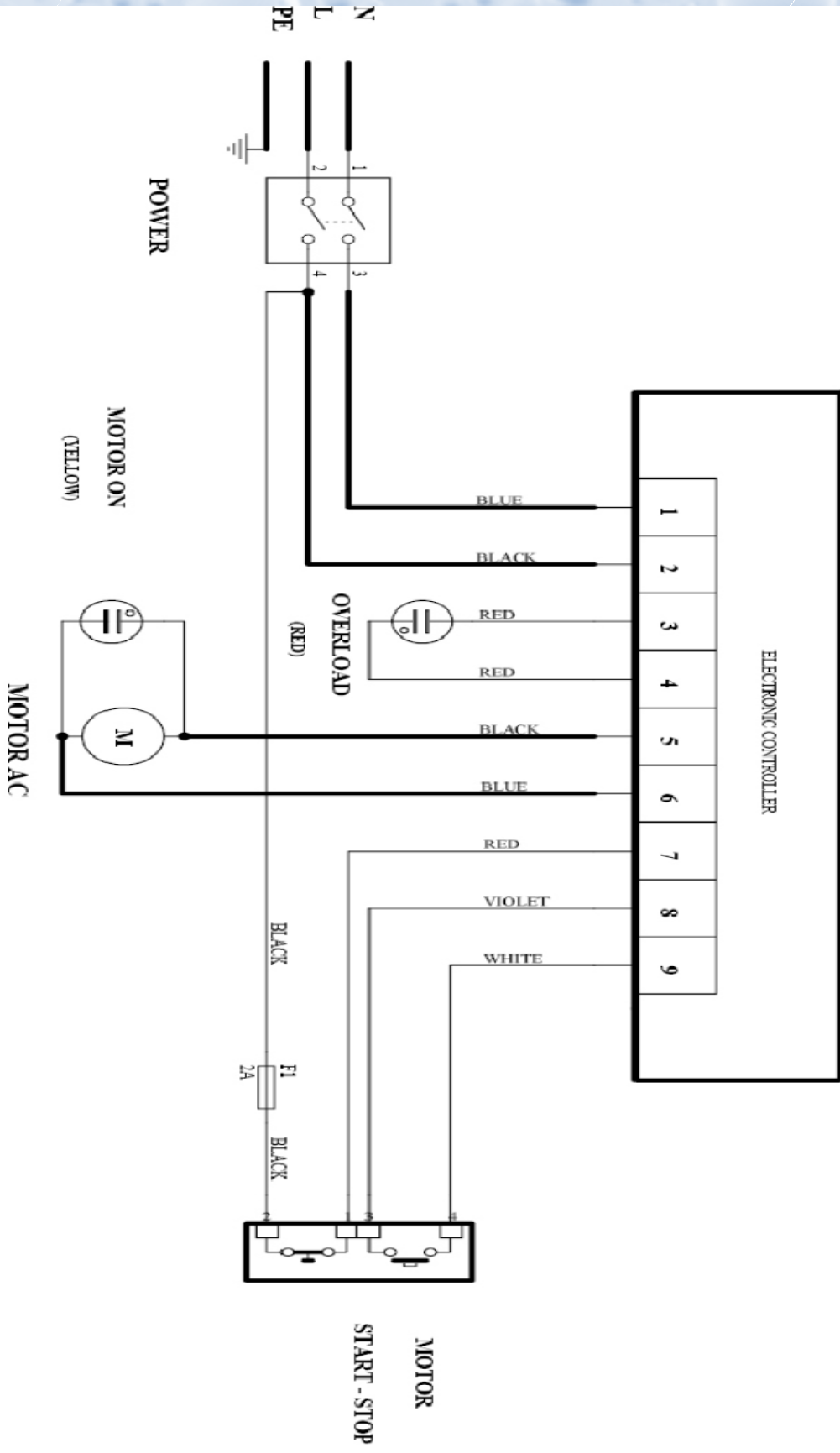
Tel: + 90 216 701 23 13 Fax: +90 216 701 23 14 Gsm: +90 532 506 39 59
web: www.marine-engineering.net



MARINE ENGINEERING

Adres: Yayla Mah. Vatan Cad. MEKA İş Merkezi No: 58 Kat:3 D.16
Tuzla - İSTANBUL / TURKEY

Tel: + 90 216 701 23 13 Fax: +90 216 701 23 14 Gsm: +90 532 506 39 59
web: www.marine-engineering.net



MARINE ENGINEERING

Adres: Yayla Mah. Vatan Cad. MEKA İş Merkezi No: 58 Kat:3 D.16
Tuzla - İSTANBUL / TURKEY

Tel: + 90 216 701 23 13 Fax: +90 216 701 23 14 Gsm: +90 532 506 39 59
web: www.marine-engineering.net